

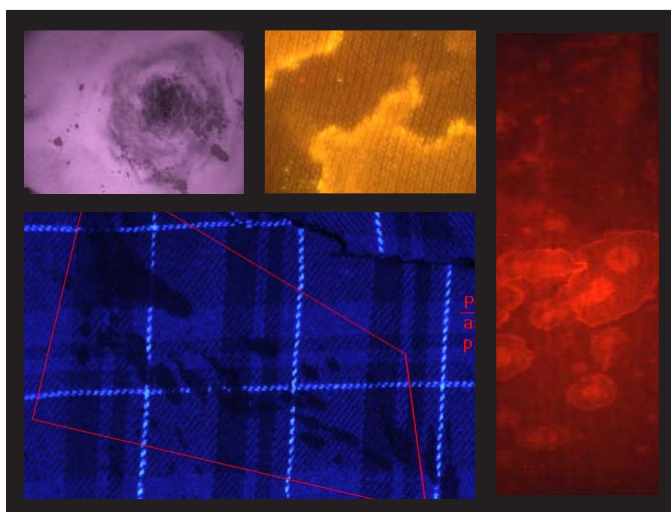
Leeds Forensic Systems

Your Comparison Microscope Source

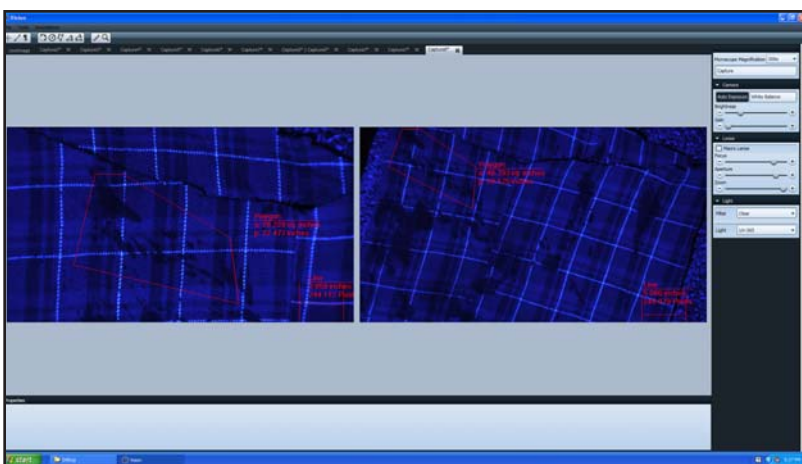
Leeds' Spectral Vision System

THE ALTERNATE LIGHT SOURCE IMAGING TOOL

Introducing the new Leeds' Spectral Vision System (LSV), a multi-wavelength viewing and imaging device used to highlight bodily fluids, trace evidence, accelerants, explosives, and gunshot residue on various types of samples. The LSV is a uniquely robust device that provides functionality to the forensic laboratory as never before.



The LSV Advantage:
With its freely rotating gimble system, containing over 59" of horizontal reach and 40" of vertical height adjustment, the LSV has a massive reach and spread allowing it to effortlessly cover evidence tables.



LSV Software Capabilities:

- Customized workstation allowing direct control of instrument
- Offers comparison views
- Capture, document, and measure fluorescence and infrared evidence
- Export images easily into standard formats including TIFF, JPEG, BMP, and PNG files which include metadata for reproducibility



LSV in the field: As with all of Leeds products, the LSV has been designed with input directly from the forensic community to maximize the systems application and ease of operation for forensic scientists.

LEEDS FORENSIC SYSTEMS, INC.

17300 Medina Road, Suite 600 • Minneapolis, MN 55447 • 763-546-8575 • 800-444-5333 • www.leedsforensics.com

CRIME SCENE AREA DO NOT ENTER

LSV Specifications

Workstation and Monitor

- Mobile small footprint self-contained workstation
- LCD High-definition monitor with remarkable contrast and color rendering
- Backlit keyboard and wireless mouse for use in darkroom environments



Optics

- Fully motorized computer controlled zoom, lens with focus, aperture, and front lens selection
- Wide field of views from ~1.0 inches to over 25.5" horizontal
- Parfocal zoom with chromatically corrected optics

Multiwavelength LED Lighting

- Ultraviolet (UV) emitting LED, peak at 365 nm
- Violet emitting LED, peak at 405 nm
- Blue emitting LED, peak at 455 nm
- Green emitting LED, peak at 505 nm
- Orange emitting LED, peak at 590 nm, sd
- Near Infrared (IR) emitting LED, peak at 850 nm
- White emitting LED with a bandwidth of 400-700 nm, color temperature at 5600°K
- Exchangeable five position barrier filter cartridge system

Filter

- Fully motorized filter turret with quickly interchangeable five position filter cassettes allowing a versatile range of specific spectral imaging. Default filter cassette comes standard with 550nm, 570nm, 610nm, 830nm and a 400nm/clear filter

Camera

- Fast, sensitive live HD color imaging camera
- 40 frames per second live refresh rate
- 2.8 Mega-Pixel highly efficient Bayer-Mask color CCD camera with over 45%/59%/62% B/G/R quantum efficiency ratings
- Camera is software-controlled with adaptive auto-brightness/exposure control

Stand

- Over 59" of horizontal reach
- 40" of vertical adjustment 13" of which are motorized



Mounting Options

LSV Rollable Stand



LSV Rollable Stand Extended



LSV Ceiling Mount



Wall Mount Option also available

LEEDS FORENSIC SYSTEMS, INC.

17300 Medina Road, Suite 600 • Minneapolis, MN 55447 • 763-546-8575 • 800-444-5333 • www.leedsforensics.com

CRIME SCENE AREA DO NOT ENTER