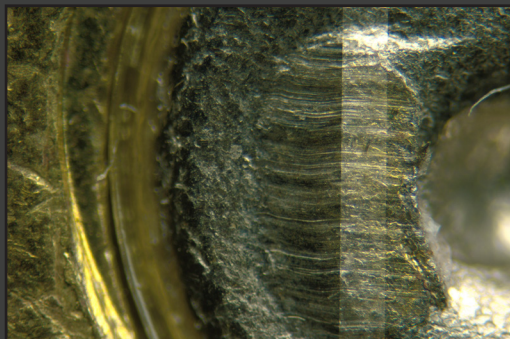


The LCF3 Firearms & Tool Marks Comparison Microscope is a robust and powerful system offering outstanding performance, ergonomic comfort, and incredible versatility. Leeds has designed the system incorporating feedback from the first hand experience of forensic examiners.

PERFORMANCE

The LCF3 is built with world-class Olympus apochromatically corrected optics, providing crisp, aberration-free, high-resolution images. A matched pair of zoom-based macro bodies are integrated into each LCF3 system providing a 16:1 zoom ratio, built-in aperture diaphragms, a parcentric and parfocal optical system, and 14 matched magnification positions in the zoom range of 6x – 102x with 11 positions being in the range of 6x – 56x. Each matched magnification position is specifically certified to match between both optical paths and is certified utilizing standards that are traceable to NIST (National Institute of Standards and Technology) sources and include an ISO/IEC 17025:2017 accredited Certification of Magnification Match. Optional additional objectives are available for the LCF3 microscope, including the Leeds 1x Ultra-widefield objective.

The LCF3 optical bridge produces an erect, un-reversed image with a large 22mm field of view. Compared images can be viewed as 100% right, 100% left, and divided or overlapped into any ratio. The Leeds' mask adjuster intuitively allows the examiner to manipulate the percentage of the right or left image being reviewed by sliding the adjuster right to left.



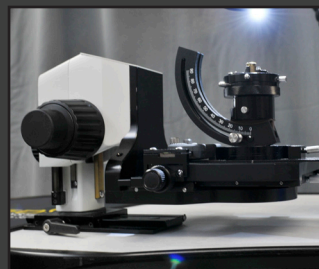
LCF3 Firearms & Tool Marks Comparison Microscope



Ergonomic comfort is a key component in the design and engineering of the LCF3. From the bean-shaped table cutout, to the beveled edge and tapering table edge, to the portable touchpad controls for table leg, column height, and lighting controls, to the tiltable binocular head, this microscope has the end user's comfort in mind.



Low profile stages help maintain an ergonomic viewing position and places the X and Y controls near the coarse and fine focus knobs. These mechanical stages and focus units are positioned to minimize repetitive hand-over-wrist motions. The stage mounts are placed on adjustable posts, allowing the stages to be removed from the work surface, to accommodate large samples.



The Leeds Universal Holder is a unique feature to the LCF3, offering a single service tool to assist in examining various

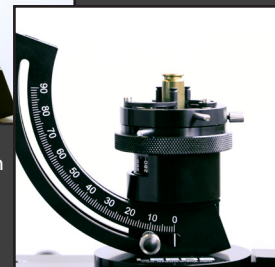
sized bullets and cartridge casings. In addition, Leeds offers a number of interchangeable sample holders for tool mark examination.



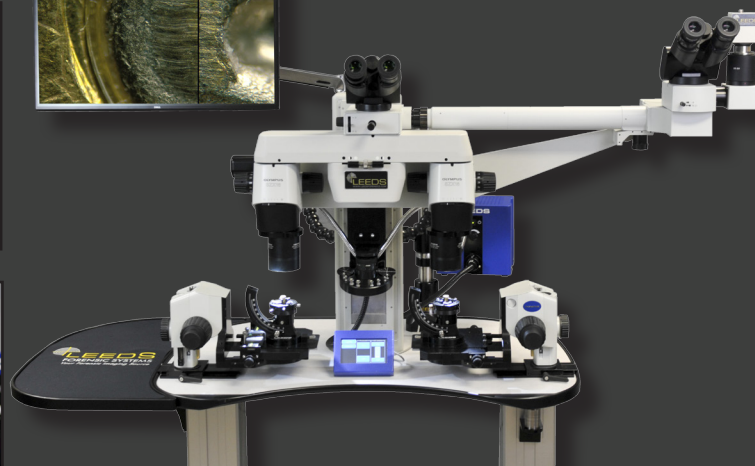
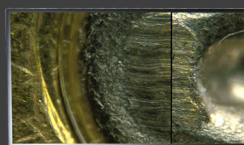
.40-cartridge casing held by the inside diameter



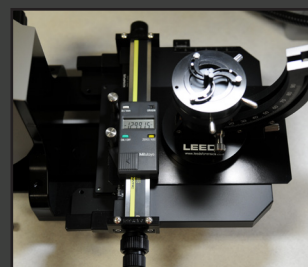
.40-cartridge casing held by the extraction groove



.40-cartridge casing held by the outside diameter



A single axis LCD measuring scale allows for direct reading of point-to-point measurement of lands, grooves, and tool marks. The scale is capable of measuring in inch or metric units with a .0005"/0.01mm resolution. Use of this LCD scale eliminates the need for measurements that require stage verniers, eyepiece micrometers, or an air gap method. A N.I.S.T. traceable, ISO/IEC 17025:2017 accredited, Certificate of Calibration is provided with every LCD scale at installation.



Firearms & Tool Marks Comparison Microscope

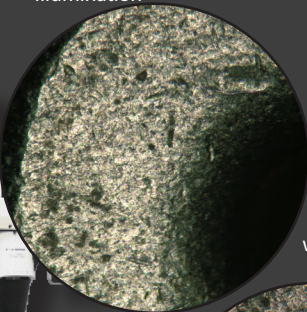
Optional Accessories

Coaxial Illumination Kit

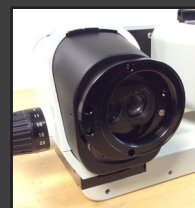
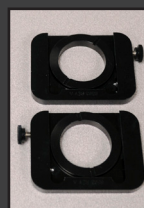
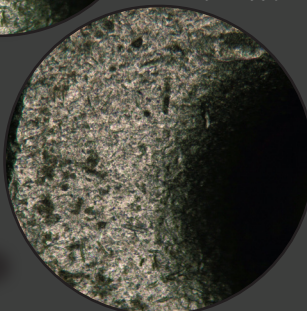
Leeds Coaxial Illumination Kit is an ideal solution for specular reflection, especially when looking at granular breach face marks and analyzing firing pin impressions. Leeds Coaxial Illumination kit provides glare-free illumination.



Breach face viewed through Leeds LCF3 with Coaxial Illumination



Breach face viewed through Leeds LCF3 with Fluorescent Illumination



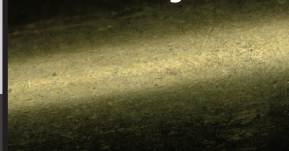
Standard Image



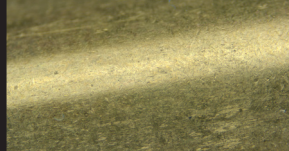
HDR Image



Standard Image



HDR Image



Leed Quick Change Kit Add this mounting for easy swapping out of objectives

LCF-CMOS5-HDR CAMERA

Leeds Special HDR Camera optimized for bullets and cartridge cases. It has a unique high dynamic range mode to eliminate glare and more accurately capture what is seen through the eye pieces.

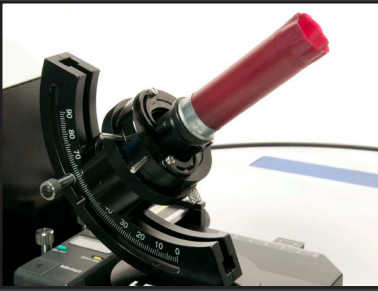


Leeds Ultra-Widefield Objective

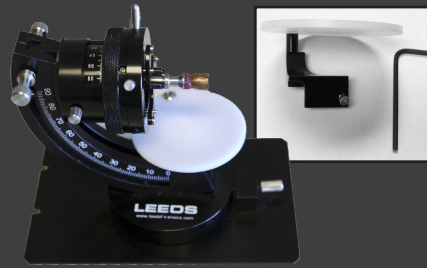
.18x objective, largest FOV at 170mm. Continuous 1.35x to 27x parfocal zoom range. WD of 106.5mm. Easily swap out different objectives with the use of Leeds Quick Change kit.



SAMPLE HOLDERS



Magnetized Shell Holder
Sold as a Pair



White Contrast Disk for Universal Holder
Sold as a Pair



Mega Holder



Wax Platten Holder



Ball Pivot Positioner Large



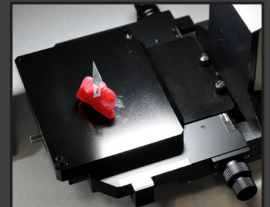
Ball Pivot Vise Holder



Illuminator Reflector
mounted on flexible tube arm,
Sold as a Pair



On-Center Holder



Reflected Document Holder

POST MOUNTS | SHELVING | PIN MOUNTS & EYEPIECE HOLDER

Monitor Post Mount

Post can be attached to the back of the table and can be oriented either to the right, the left or middle of table.



Keyboard & PC Mounts

Easily attach to the microscope table leg (either right or left) and can be adjusted to desired height.



LCF3 Table Extension Kit

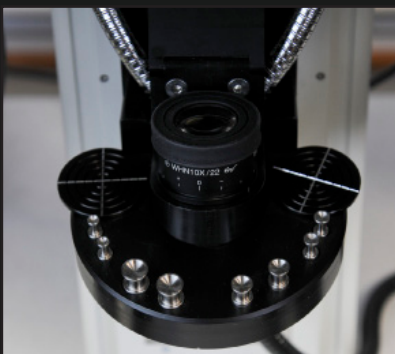
Extension table fits the left or right side of the LCF3-station, includes a neoprene pad insert, and Leeds unique lip anti-roll off lip.



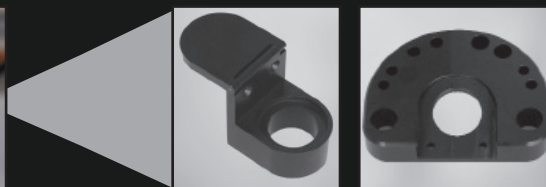
LCF 16" SHELF

LCF 16" shelf attached to the LCF3

LEEDS EYEPIECE AND PIN MOUNT HOLDER



Pin Mount Holder Tray, attaches to eyepiece holder (required when adding on).



Eyepiece Holder, attached to the LCF column & supports the pin mount holder.



Set of Pin Mount, Pairs



LCF 12" SHELF

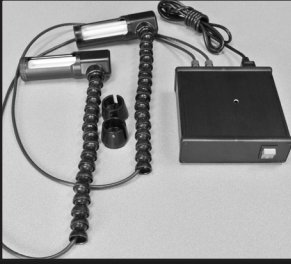
Eyepiece Set



Includes 10x eyepiece, Widefield focusing 10x, & 10x Crosshair.

LIGHTING OPTIONS

LEEDS FLUORESCENT QUAD-TUBE LIGHTS



LCF2 Fluorescent Kit
Cross Bar Mount



LCF2 Fluorescent Light
Stage Mount

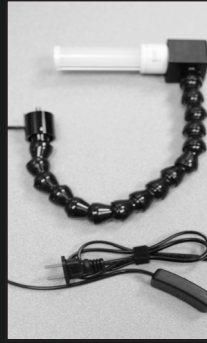
LEEDS LED LIGHT STIX



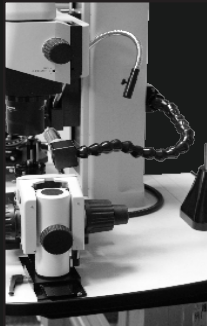
STAGE MOUNT
articulated arm
attachment, stage
mount



COLUMN MOUNT
flexible tube arm,
column mount.
LCF3 ONLY



CROSS BAR MOUNT
flexible tube arm,
column mount



QUAD-TUBE REPLACEMENT



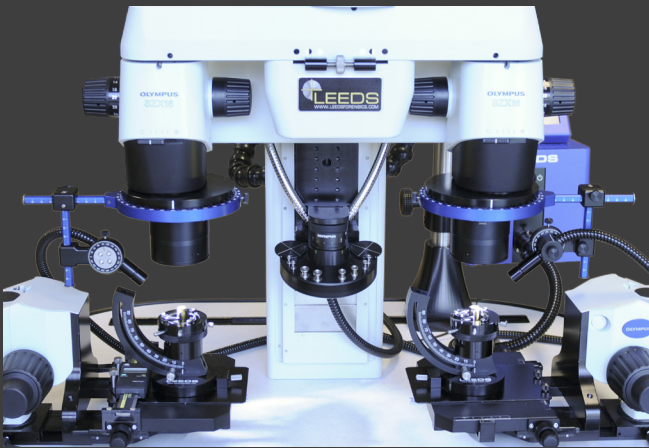
Fluorescent
Quad-tube,
color-matched
pair of
replacement
Bulbs. Sold as
set of 2.



TWIN-TUBE REPLACEMENT

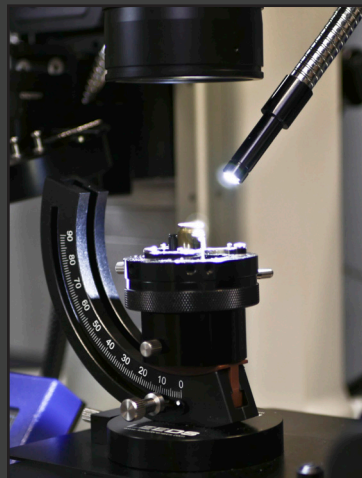


Twin-tube
Fluorescent
replacement
Bulbs, Sold as
set of 2.



Light Guide Positioner

Used to record and duplicate the distance from sample, height, angle of illumination, and rotary position. Useful for reverse lighting technique.



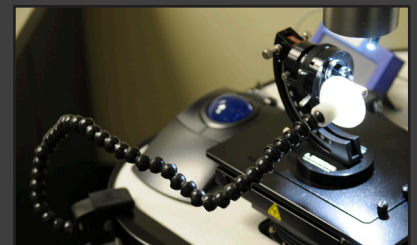
Bifurcated Fiber Optic Light
Guide



Diffuser Lens



Focusing Spot Lens

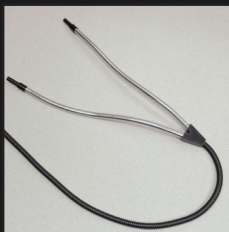


Reflector attaches to station



Front mount attaches to
LCF column

+



LCF Fiber Optic Cable

=

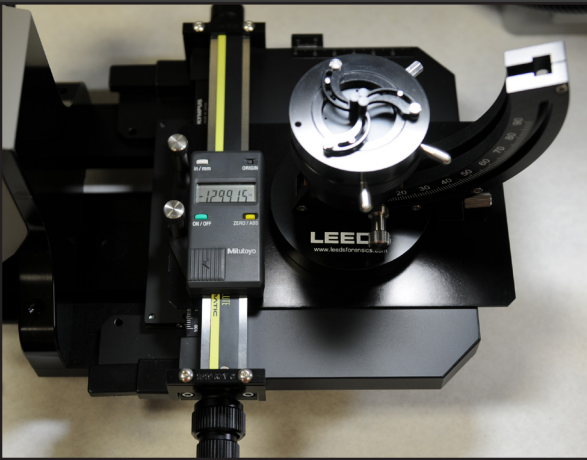


Front mount & Fiber
Optic Cable



Bullet shown without Reflector vs. with Reflector

MISCELLANEOUS ACCESSORIES



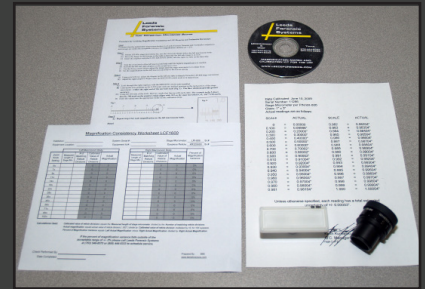
LCF3-SCALE

Upgraded scale to replace previous versions of LCF scales.



LCF-COVER

Dust Cover for LCF



Leeds Calibration Kit

Magnification matching kit

CASTERS | ANTI-VIBRATION FEET



Anti-vibration Pads, sold as set of 4, for LCF2 or LCF3



Leveling Caster, Sold as set of 4



Anti-vibration feet, Sold as set of 4 for LCF or LCF3



High deflection anti-vibration feet, Sold as set of 4 for LCF3