



MOVEED

OR-GJC8000

All-In-One Forensic Light Source

OR-GJC8000 This hand-held Light Source is a multi-functional, portable tool ideal for use in the field and at the laboratory, providing essential light sources required to reveal/enhance contrast evidence of bodily fluids, fingerprints, trace evidence, footwear, and tire impressions.

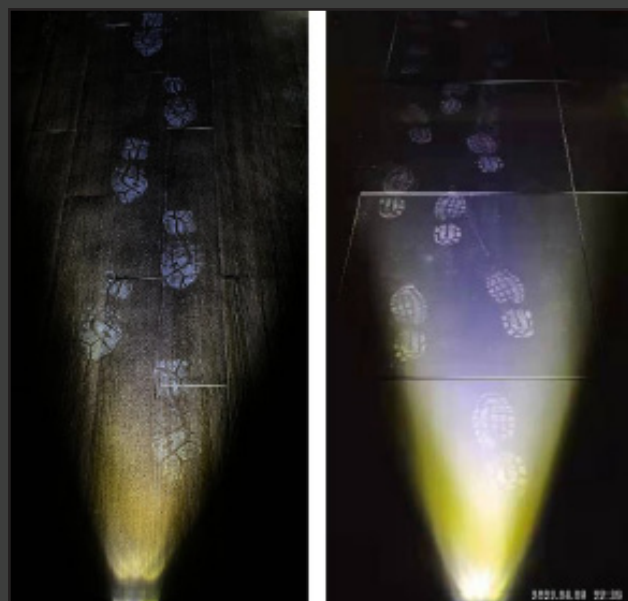
AVAILABLE WAVELENGTHS:

Laser Lights	530nm (2W), 445nm (3W), CSS (4W)
Multi-band Lights	White Light (10W), UV 365nm (10W), UV 395nm (8W)
Footwear Impression Light	40W
Light Source Intensity	Adjustable

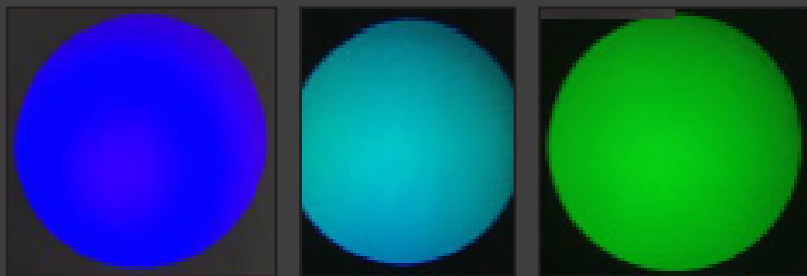
BEAM SIZE:

Laser & Multi-band Lights	Diameter at 0.5 meter \geq 39cm
	Diameter at 1 meter \geq 78cm
Footwear Impression Light	At 0.5 meter: W36cm * H3.8cm
	At 1 meter: W72cm * H7.6cm

Custom Configurations available upon request.



Integrated design of Laser Lights, Multi-band Lights, Footwear Impression Oblique Light and White Uniform Search Light in one unit. Laser Lights, Multi-band Lights, and White Search Light give uniform light beam that is ideal for revealing and enhancing evidence. Footwear Impression Light gives oblique light beam that is ideal for detecting surface debris and shoe/tire prints.



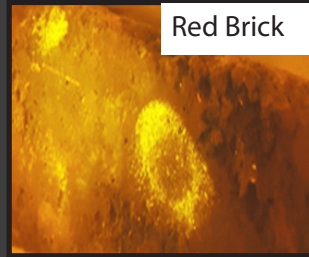
SPECIFICATIONS:

Single battery group for Footwear Impression Light (40W) run time up to 70 minutes.	
Device Size:	7.5" x 4" x 3"



LEEDS
www.leedsmicro.com

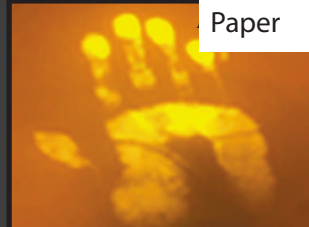
OR-GJC8000 Portable and Easy to Operate



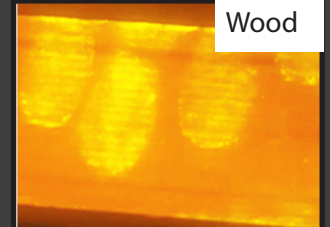
Red Brick



Dark Color Cloth

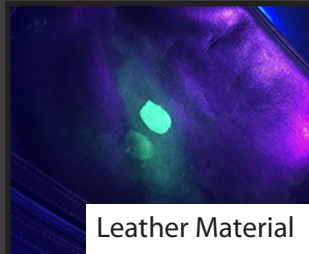


Paper



Wood

Targeting Chemical Reagent Treated



Leather Material



Old Fingerprint on wall

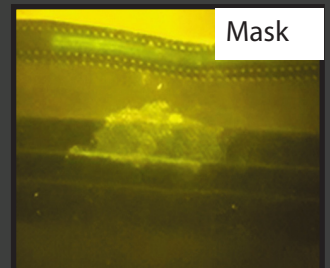


Leather Material

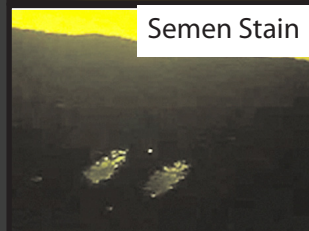
365nm Light Illuminating AIE Dual Purpose Latent Print Powders



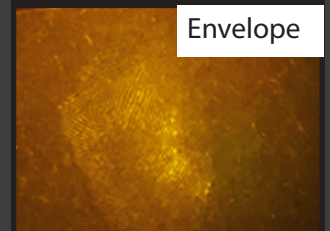
Plastic Bag



Mask



Semen Stain



Envelope

Laser Light Source



10/2022