



Moveed®

Lighting Equipment

Portable Laser Evidence Detection Instrument

OR-GJG4000 This hand-held laser offers three different wavelengths in green, blue, and CSS. The end user is able to increase or decrease the intensity as needed using a switch on the laser itself. Ideal for crime scene screening to identify fingerprints, saliva, semen, blood, urine, trace evidence, and gunshot residue.

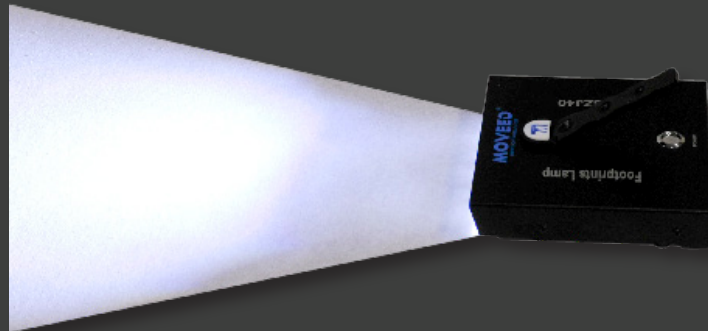
Green Laser Wavelength	532nm
Blue Laser Wavelength	445nm
CSS Laser Wavelength	455nm - 510nm
Maximum output power	6W
Battery	Built-In Lithium battery 12Ah, charging voltage DC16.8V.
Spot Size	Spot diameter at 0.5m location ≥7CM Spot diameter at 2m location: ≥28CM
Weight	13.2 lbs
Dimensions	11.8" L x 4.93" W x 6.7" H



Due to intensity of light, protective eye wear must be worn.

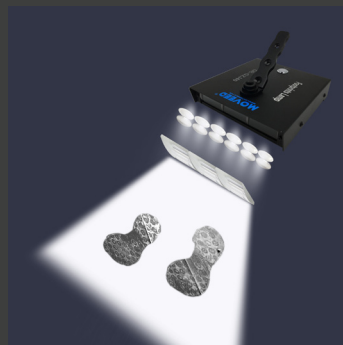
Wide Footprint Light

OR-GZJ40 The Wide Footprint Light offers an intense flat beam of light in a compact package. This tool is ideally suited for illuminating any flat object to identify footprints, traces and micro material evidence on various floor surfaces.



Optional extended handle attachment available for an additional cost.

Color Temperature	5000K
Power	≥30W
Lighting time	≥100 min
Working Current/Voltage	5.6A @ 12V
Charging Voltage	12.6V
Battery Type	Lithium-ion
Charging Time	3 hours
Light Spot Uniformity	80%
Weight	1.7 lbs
Dimensions	5.9" L x 5.6" W x 1.3" H



 **LEEDS**
www.leedsmicro.com

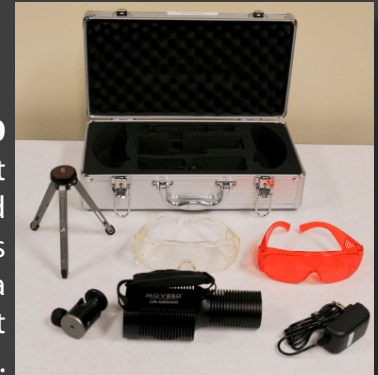
6-band Uniform Detection Light Source

OR-GSS300 A hand-held, rechargeable light source with 6 wavelengths, used to identify various trace evidence samples including fingerprints and bodily fluids at crime scenes. This light source offers instant start up, quick change between wavelengths, and can be mounted on a tripod for convenient hands free use.



Wavelength Parameter	White Light (10W)	≥ 6500K
	White Light (3W)	≥ 4500K
	Green (3W)	520-532nm
	Blue (9W)	440-450nm
	UV (9W)	390-400nm
	UV (9W)	360-370nm
Voltage		DC8.4V
Battery Capacity		3,200mAh
Weight		2.43 lbs
Light Source Dimensions		7" L x 3" W x 3" H

OR-GSS300
Light Source and accessories come in a convenient carrying case.



Portable Ultra-wide Spectrum Evidence Searching/Imaging System



Wavelength/Power	365nm/12W, 7000K/3W, 550nm/3W, 850nm/3W
Filters	365nm, 550nm, 850nm
Battery	Lithium-ion, capacity 5Ah
Charging Voltage	DC 8.4V
Dimensions	3.85" L x 2.8" W x 3.77" H
Weight	≤ 0.75 lbs (not including mobile device)

OR-GQP5000 This portable ultra-wide spectrum evidence imaging system is easy to operate in the lab or at the crime scene. The system integrates a user's mobile phone with a camera, complete with light sources and filters, creating a tool that makes it easy for a one person to operate. Ideal for the search of fingerprints, palm prints, and footprints on surfaces such as walls, plastic, steel, doors, windows, stainless steel, mirror, transparent glass, coated paper, marble, furniture, etc. Capture photos or videos and search evidence such as blood spatter or bloodstain on dark and patterned fabrics, carpeting, or tiles, etc. Canopied light source effectively protects user's eyes and skin from UVA light exposure.



Updated 5.29.2020