

LEEDS N-IRC

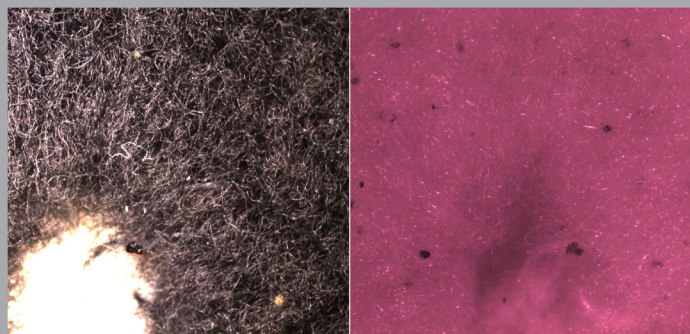
Near-Infrared Color Camera & Software Kit for Zeiss Stemi 508

THE LEEDS N-IRC NEAR-INFRARED (N-IR) AND WHITE LIGHT IMAGING KIT PROVIDES A SINGLE CCD COLOR CAMERA THAT YIELDS REAL TIME, HIGH CONTRAST, VISIBLE LIGHT (COLOR) AND N-IR IMAGES. IT'S AVAILABLE AS AN ADD-ON FOR YOUR ZEISS STEMI MICROSCOPE, OR ON THE THE ZEISS STEMI YOU BUY FROM US.

THE LEEDS N-IRC KIT INCLUDES LEEDS VISION AND ANNOTATION SOFTWARE. ALL SOFTWARE MEASUREMENTS INCLUDE AN ISO/IEC 17025:2005 ACCREDITED CERTIFICATE OF CALIBRATION THAT IS TRACEABLE TO NIST STANDARDS.

White Light

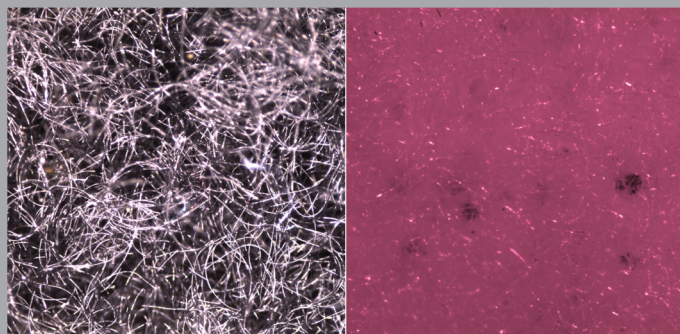
Infrared Light



Gun Shot residue image taken at low magnification

White Light

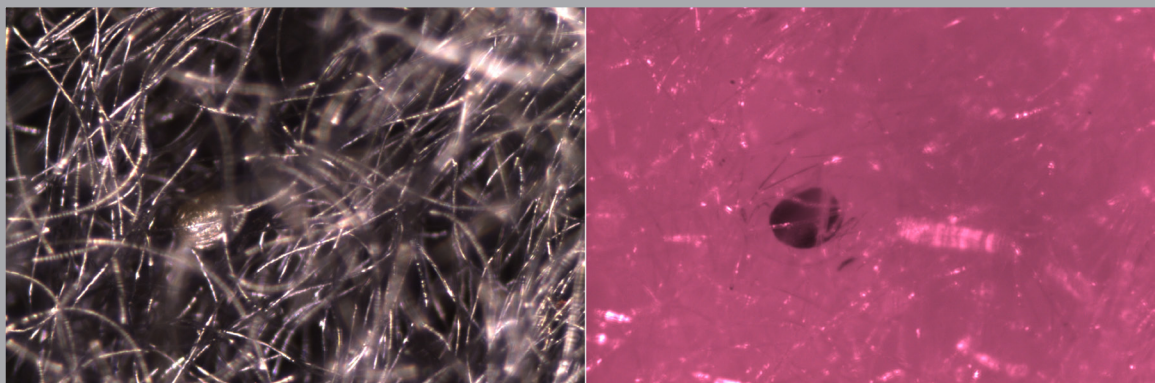
Infrared Light



Gun Shot residue image taken at medium magnification

White Light

Infrared Light



Gun Shot residue image taken at high magnification

Leeds N-IRC Specifications

LEEDS N-IRC Components

Camera:

- 2.8 MP CCD camera with 16-bit color.
- Highly sensitive and light efficient for both the visible and near-infrared spectrums.
- Up to 40 frames per second live refresh rate at full resolution and full bit depth.
- 65db Dynamic Range.
- Camera is software-controlled with adaptive autobrightness/exposure control.

Software:

- Leeds Vision Software provides control of the camera and allows the capture and saving of digital images in standard image formats (TIFF, JPEG, BMP, PNG with metadata).
- Provides annotation and pre-calibrated measurement tools, along with the capability to perform side-by-side comparisons of two captured images.
- Includes an ISO/IEC 17025:2005 certificate of calibration for all measurement functions of the N-IRC system traceable to NIST standards.

Filter Adapter (2-position):

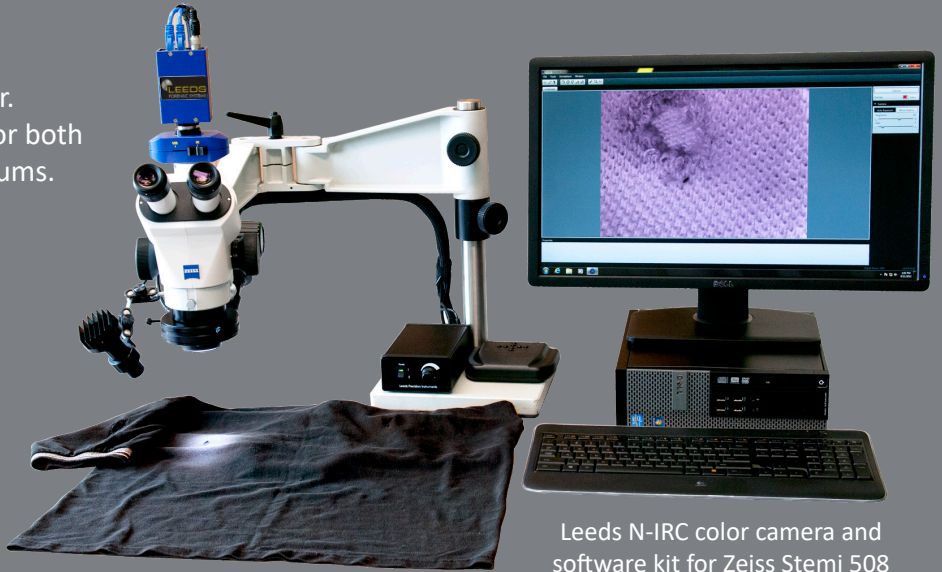
- Visible light images (400nm - 700nm).
- Infrared images (LP filter 830nm).

IR Spot LED Illuminator:

- 860 nm LED.

Leeds Custom Base Assembly:

- Leeds Boom Stand, Base Plate & Column.
- Leeds Articulated Boom Arm.



Leeds N-IRC color camera and software kit for Zeiss Stemi 508

Microscope:

Zeiss Stemi 508 Stereo Microscope

- Trinocular body, Greenough Design.
- 7.7:1 apochromatically corrected zoom optics with a magnification range of 0.65x-5x (6.5x-50x with 10x eyepieces).
- Zoom range has 10 click stops for repeatable calibrated observations.
- Eyepiece PL 10x/21 mm focus.



Leeds N-IRC Camera & Filter slider



Leeds IR Spot LED Illuminator



Leeds N-IRC can be purchased on GSA Schedule Contract GS-07F-097CA

LEEDS FORENSIC SYSTEMS, INC.
17300 MEDINA ROAD, SUITE 600
MINNEAPOLIS, MN 55447
PHONE: 763-546-8575
WWW.LEEDSFORENSICS.COM

