



LCF2

Firearms & Tool Marks Comparison Microscope

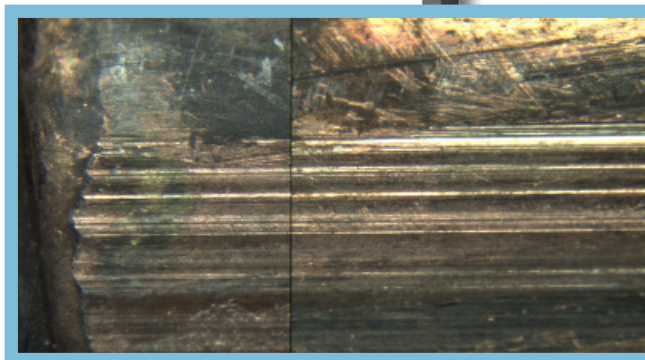
Leeds LCF2 Firearms and Tool Marks Comparison Microscope is a powerful comparison system, featuring:

- world-class Olympus apochromatically corrected macro-zoom optical bodies with 10:1 zoom ratio;
- built-in aperture diaphragms;
- 26" x 35.5" wood laminated table with motorized height control.

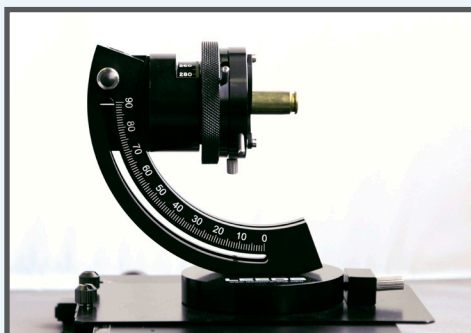
LCF23 is an a great solution for the cost-conscious forensic laboratory seeking the same quality and versatility found with all Leeds products.

The LCF2 bridge produces an erect un-reversed image with a large **22mm field of view**. Compared images can be viewed as 100% right, 100% left and divided or overlapped in any ratio.

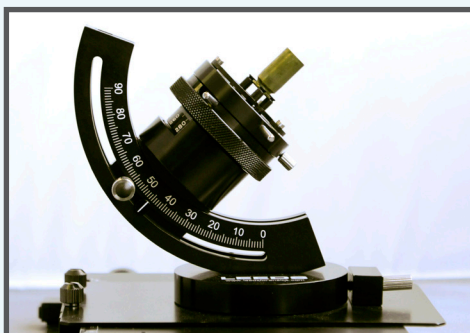
The LCF2 blends power, functionality, and price sensitivity.



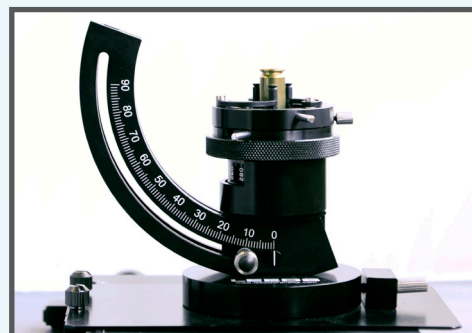
Standard with the LCF2, the Leeds **Universal Holder** (shown below) eliminates the need for multiple sample holders and accessory brushes for firearms examinations. The Leeds Universal Holder has 90° vertical-to-horizontal positioning range. Its 360° rotatable chuck can hold an item as small as .030" wire, to as large as a 10-gauge shotgun shell. Also allows a shell to be gripped by its inside or outside diameter or can hold a shell by the extraction groove.



.40-calrtridge casing held by the inside diameter

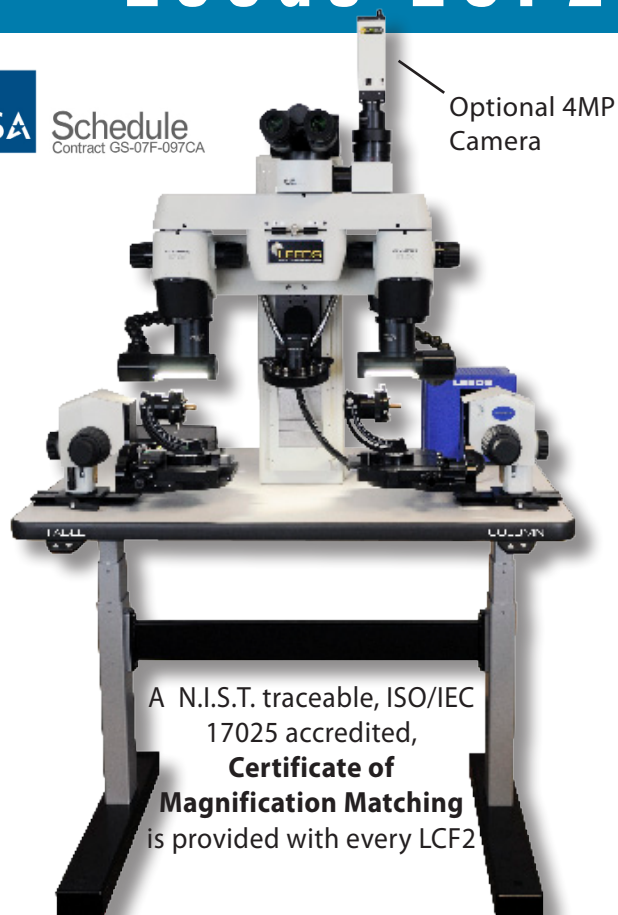


.40-calrtridge casing held by the extractor



.40-calrtridge casing held by the outside diameter

Leeds LCF2 Specifications



A N.I.S.T. traceable, ISO/IEC 17025 accredited, **Certificate of Magnification Matching** is provided with every LCF2

LEEDS LCF2 Firearms & Tool Marks Comparison Microscope Technical Specifications

Objective	1.0x*	0.5x
Zoom Range	5.6 - 56x	2.8 - 28x
Working Distance (mm)	81	171
N.A.	0.10	0.05
	* 1x objective is most commonly used for zoom range. Other objectives available upon request.	
11 Matched magnification positions with 1x objective	5.5, 7, 9, 11, 14, 18 22, 28, 35, 45, 55	
Zoom Ratio	10:1	
Field Number (mm)	22	
Stage Movement & Universal Holder	X-axis (mm) Y-axis (mm) Z-axis (mm) Axial Slope Axial Rotation Base Rotation Stage Size (mm)	50 77 32 90° 360° 360° 180 x 135
Universal Holder	Outside Diameter Inside Diameter	0.030 - 0.78" 0.36 - 1.12"
Micrometer Range	Range Resolution	0 - 3" 0.0005"/0.01mm
Wood Laminated Table Dimensions	Height Width Depth Column Z-Axis Travel Footprint	25 - 50" 35.5" 26" 6" 35.5" x 26"
Electrical Requirements	Voltage Current (max) Frequency	100 - 240 VAC 15 A 50 - 60 Hz

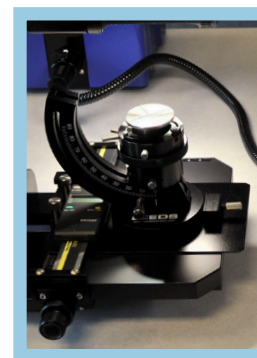
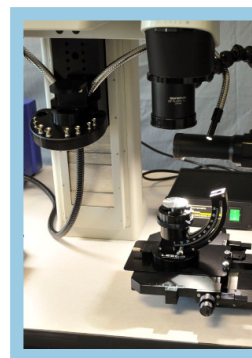
LCF2 LIGHTING OPTIONS:

- Pair of 5000K 13W Fluorescent quad lamp lights with articulating support arms and rotating hoods to control sample contrast.
- Dual 18" gooseneck light guide with 30" flexible fiber bundle with either halogen or LED light source.
- LED Spot Light.

QUALITY CONTROL:

A single-axis LCD measuring scale is normally added for direct reading of point-to-point measurement of lands, grooves, tool marks, etc. It is capable of **measuring in inches or metric units** with a .0005"/0.01mm resolution. Use of this LCD scale eliminates the need for measurements that require stage veniers, eyepiece micrometers or an air gap method. A N.I.S.T. traceable, ISO/IEC 17025 accredited, **Certificate of Calibration** is provided with every LCD scale at installation.

The parfocality of the LCF2 minimizes the need for constant refocusing by the examiner while changing magnification settings. All visual magnifications are clearly marked on the zoom knobs, eliminating the need for use of multipliers to determine the total viewed magnification.



LEEDS PRECISION INSTRUMENTS, INC.
DBA LEEDS FORENSIC SYSTEMS

17300 MEDINA RD, SUITE 600, MINNEAPOLIS MN 55447 USA
763-546-8575 // WWW.LEEDSFORENSICS.COM