



# Hand-Held Compact Forensic Light Source

## MOVEED OR-GJC8000

This convenient, compact, hand-held forensic light source, made by Moveed and sold by Leeds, is a multi-functional tool -- for use in the field or at the laboratory. It supplies essential light sources to **view trace evidence samples** by providing enhanced contrast viewing of bodily fluids, fingerprints, trace fibers, footwear, tire impressions, etc.

**Convenient, integrated design of Laser Lights, Multi-band Lights, Footwear Impression Oblique Light, and White Uniform Search Light.**

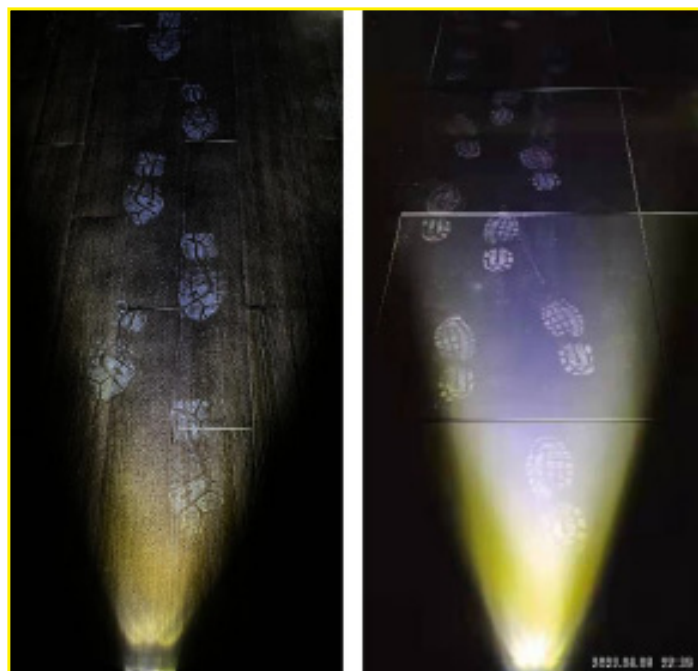
**Size: 7.5" X 4" X 3"**

Laser Lights, Multi-band Lights, and White Search Light give a **uniform light beam** designed for revealing and enhancing evidence.

Footwear Impression Light gives **oblique light beam** that helps detect surface debris and shoe or tire prints. Single battery group for Footwear Impression Light (40W) **run time up to 70 minutes.**



Handle holds replaceable battery



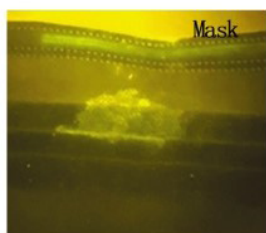
**Device size:  
7.5" X 4" X 3"**

	OR-GJC 8000A-1	OR-GJC 8000A-1-2	OR-GJC 8000B	OR-GJC 8000C-1	OR-GJC 8000C-2	OR-GJC 8000D
Footprint Light/ Power	40W	40W	40W	40W	40W	40W
White Light/Power	10W	20W	10W	10W	20W	20W
UV 365nm/Power	10W	10W	10W	10W	15W	10W
UV 395nm/Power	8W	#	8W	8W	#	8W
Blue 450nm/Power	#	#	#	#	#	8W
Green 525nm/Power	#	#	#	#	#	8W
Laser 530nm/Power	2W	2W	Alternative		#	#
Laser 445nm/Power	3W	3W	#	#	#	#
Laser CSSO/ Power	4.5W	4.5W	#	#	#	#

**Notes:** LED Wavelengths +/- 5nm; Laser +/- 2nm; # Wavelengths customizable



Plastic Bag



Mask



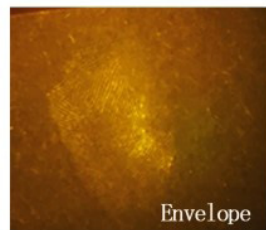
Red Brick



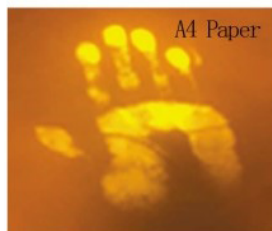
Deep Color Cloth



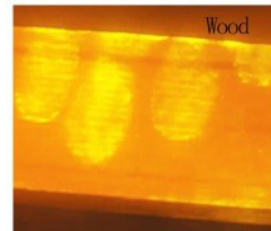
Semen Stain  
on Deep Color Cloth



Envelope



A4 Paper



Wood



**Light Source  
Intensity is  
adjustable.**

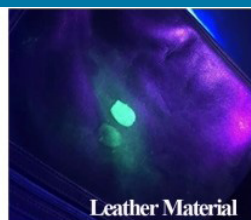
**Laser Light Source**

**Targeting Chemical Reagent Treated**



Old Fingerprint On the Wall

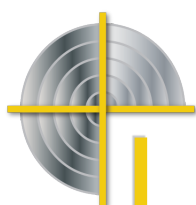
**365nm Light Illuminating AIE Dual  
Purpose Latent Print Powders**



Leather Material



Leather Material



**LEEDS**  
FORENSIC SYSTEMS