



# Trace-Z

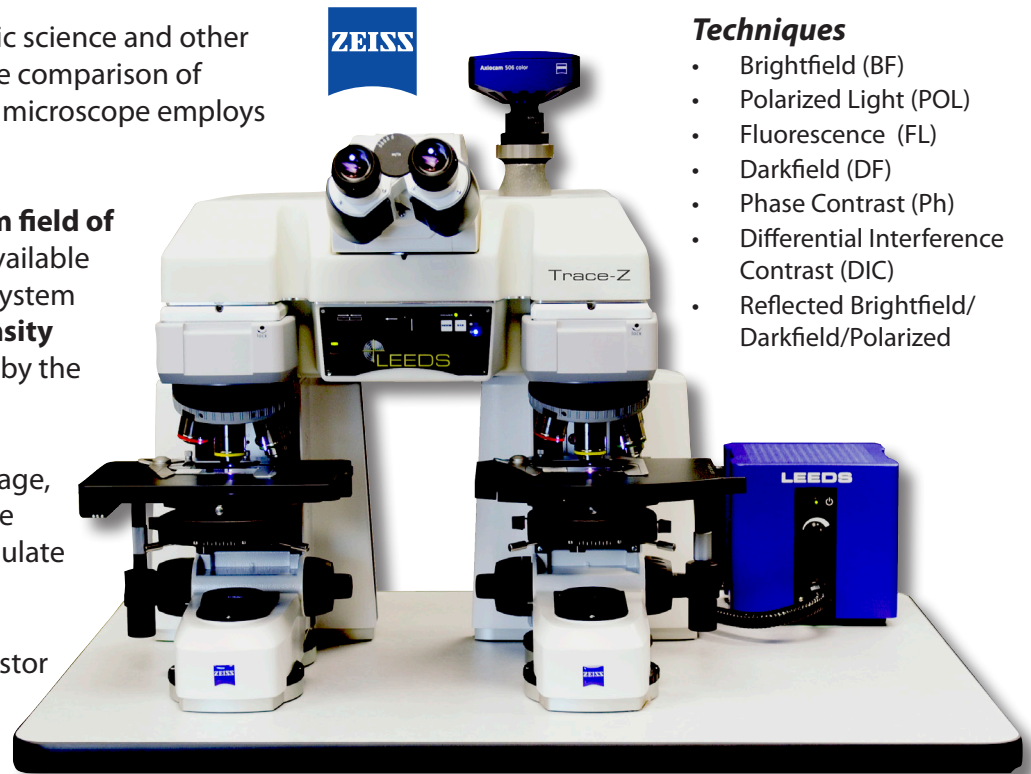
## Trace Evidence Comparison Microscope

The Trace-Z is designed for forensic science and other applications requiring side-by-side comparison of various specimens. This powerful microscope employs Zeiss optical components.

The Trace-Z offers a unique, **23mm field of view** -- the **largest field of view** available in the forensic marketplace. The system provides superior **color and intensity balance** requiring no adjustment by the operator.

Providing an erect, unreversed image, the Trace-Z allows the operator the ability to quickly and easily manipulate specimens for examination.

A motorized, sweeping mask adjustor allows the examiner to single-handedly control the image dividing line and overlay.



### Techniques

- Brightfield (BF)
- Polarized Light (POL)
- Fluorescence (FL)
- Darkfield (DF)
- Phase Contrast (Ph)
- Differential Interference Contrast (DIC)
- Reflected Brightfield/  
Darkfield/Polarized

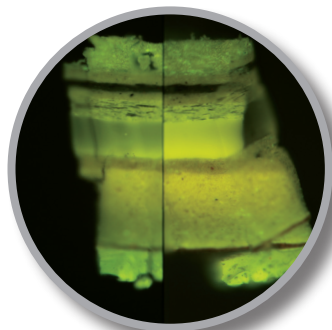
A dual-view version of the Trace-Z is optionally available for simultaneous observation of evidence and is ideal for training and peer review.

## Configurability

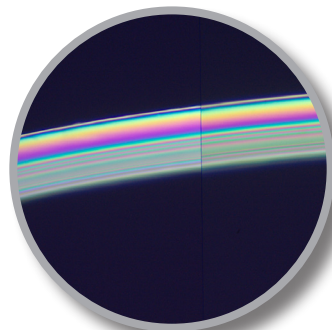
The Trace-Z Comparison Microscope provides a variety of configurations to meet numerous applications --- and can be configured for brightfield, darkfield, polarized light, phase contrast, fluorescence, and other contrast methods.



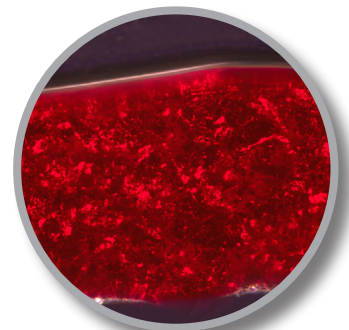
Brightfield image



Fluorescent light image



Polarized light image



Polarized light image

# Trace-Z Comparison Microscope

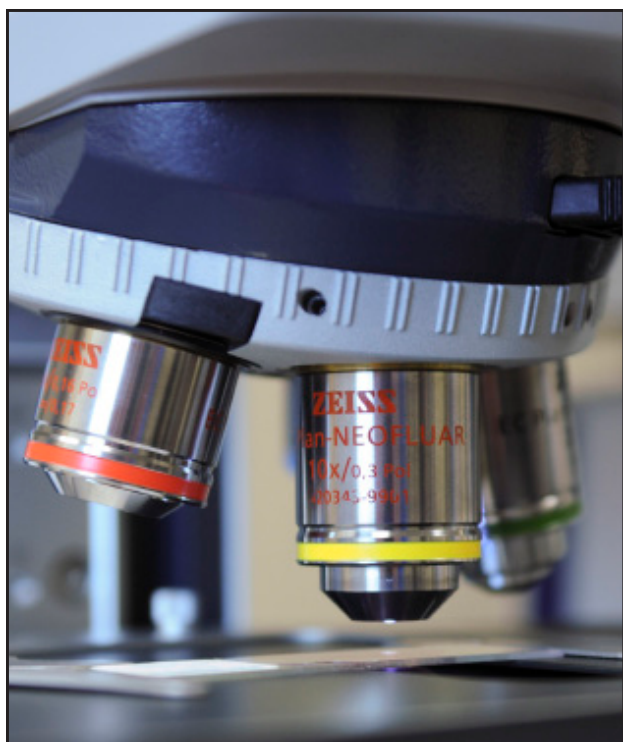
## Features

- 23 mm Field Number
- Erect unreversed image
- Color and intensity balanced
- Image Views: Split-field, superimposed, and individual right/left
- Integrated camera port with a fixed 70/30% split between eye pieces and camera
- NIST traceable, ISO/IEC 17025:2005 accredited; NIST/ISO Certificate of Calibration for the camera measurement; Certificate of Magnification Match
- Optional dual-view comparison microscope version available, with an illuminated LED arrow to aid in indicating specimen features



## Technical Specifications

- Footprint of Trace-Z: 23" wide x 20" deep
- Height from table surface to eye point: 18" - 23.5" range
- Length between optical centers: 13.5"
- Optional Table Dimensions: 25-50" H x 35.5" W x 26" D
- Electrical Requirements: 120 or 240 VAC, 50 - 60 Hz



LEEDS PRECISION INSTRUMENTS, INC.  
DBA LEEDS FORENSICS  
17300 MEDINA ROAD, SUITE 600, MINNEAPOLIS MN 55447  
+1.763.546.8575 // [WWW.LEEDSMICRO.COM](http://WWW.LEEDSMICRO.COM)