



# LCT Trace Evidence Comparison Microscope



**GSA** Schedule  
Contract GS-07F-097CA

Leeds LCT can be purchased on Leeds  
GSA Schedule Contract GS-07F-097CA

The Leeds Trace Evidence Comparison Microscope (LCT) is designed for forensic science and other science disciplines that analyze the **critical comparison of specimens such as hair, fibers, paint chips, plant matter and soil.**

The LCT uses a high-quality optical system made by Olympus. Optical paths are factory-balanced for color and intensity, requiring no adjustment by the operator.

Providing a **large 22mm field of view**, an erect, unreversed image, the LCT allows the operator to quickly and easily manipulate specimens for examination.

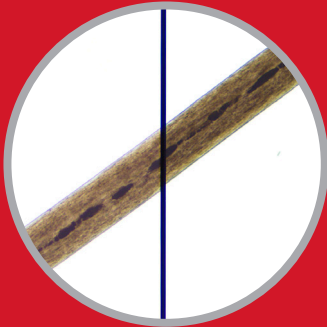
With the Leeds LCT Comparison Microscope, **two specimens can be viewed as split-field, superimposed, or individual images.** Separate, bridge-marked, slide controls allow for continuous adjustment from 100% of the left image to 100% of the right image, or any position in between.



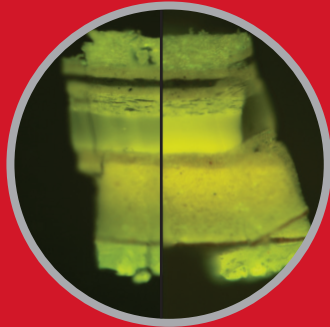
The LCT circular rotating mechanical stages are designed with low-slung ergonomic controls, offering the examiner a more comfortable wrist position when adjusting the stage position.



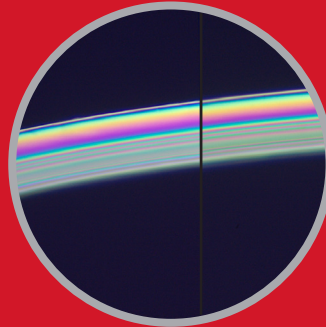
# LCT Specifications



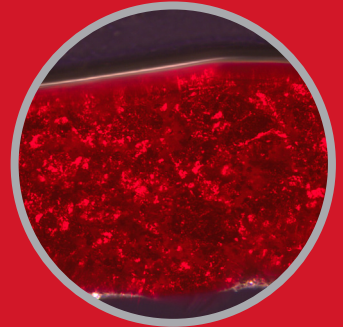
Brightfield image



Fluorescent light image



Polarized light image



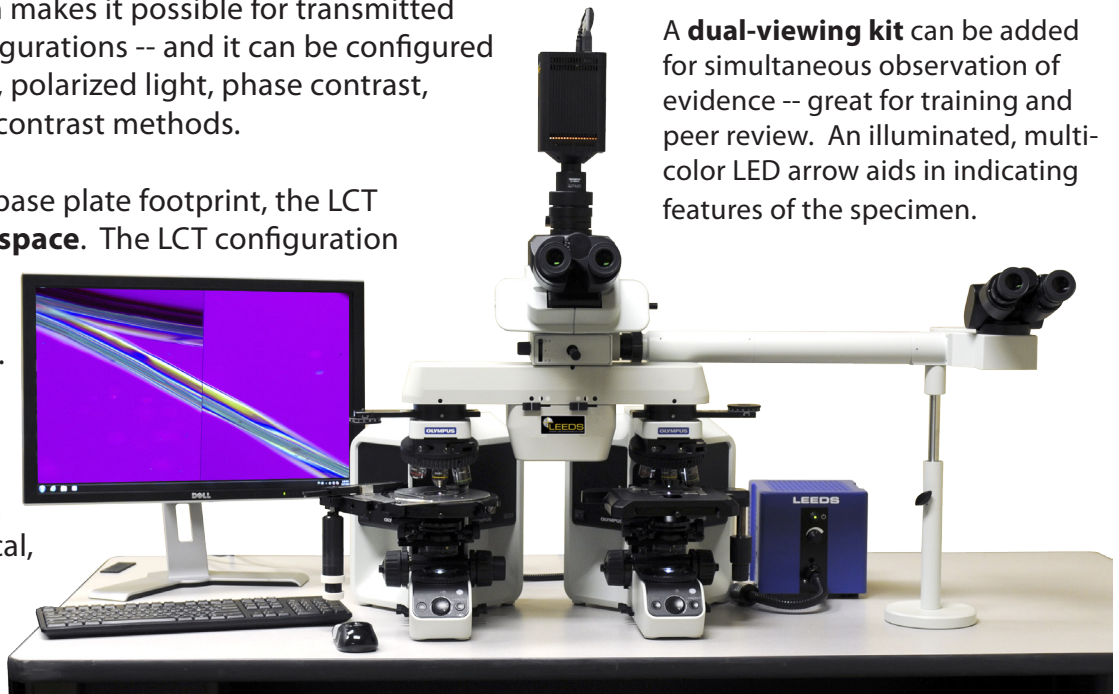
Polarized light image

The LCT modular design makes it possible for transmitted and reflected light configurations -- and it can be configured for brightfield, darkfield, polarized light, phase contrast, fluorescence and other contrast methods.

Thanks to the compact base plate footprint, the LCT requires **minimal work space**. The LCT configuration allows a single user to easily manipulate both samples simultaneously.

The LCT is also capable of single microscope use applications such as investigation of biological, medical or chemical specimens in all types of illumination.

A **dual-viewing kit** can be added for simultaneous observation of evidence -- great for training and peer review. An illuminated, multi-color LED arrow aids in indicating features of the specimen.



## LCT FEATURES



- Image Views: split-field, superimposed, and individual right/left
- Height from table surface to eyepoint: 19" to 23" range
- Length, optical center to optical center: 13 1/4"
- Footprint of LCT: 26 1/2" wide x 20" deep
- Compatible with dual-view attachment and tilting observation tubes
- Modular design
- Large 22mm field of view
- Erect image
- Color and Intensity balanced



LEEDS PRECISION INSTRUMENTS, INC.  
DBA LEEDS FORENSIC SYSTEMS  
17300 MEDINA RD, SUITE 600, MINNEAPOLIS MN 55447  
763-546-8575 // [WWW.LEEDSMICRO.COM](http://WWW.LEEDSMICRO.COM)