



LSV2

Alternate Light Source Imaging Tool

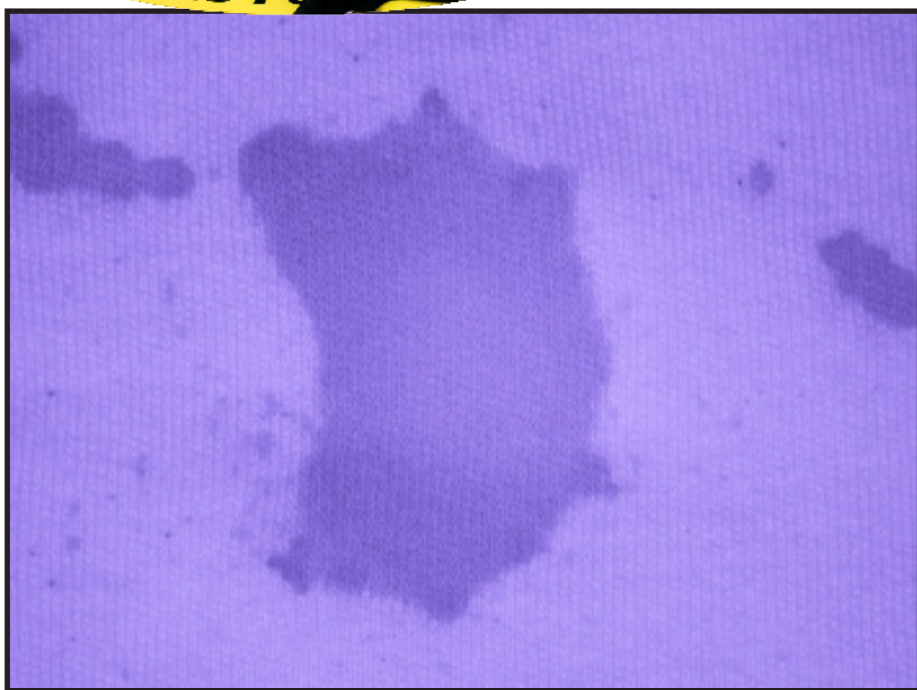
The *next gen* digital ALS system is here -- the **LSV2 Leeds Spectral Vision System!**

The LSV2 is a **multi-wavelength imaging tool** used to rapidly view, capture, and document bodily fluids, victim bruising and bite marks, trace evidence, accelerants, explosives, and gunshot residue on various types of samples.



Designed to significantly enhance the forensic laboratory's ALS screening capabilities, the LSV2 offers:

- **Sensitivity:**
 - Highly sensitive camera offers sensitivity equal to and greater than the human eye in fluorescence & near infrared.
- **Ease-of-use:**
 - High throughput screening and documentation does not require advanced photography experience.
- **Highly variable field of view and working distance:**
 - Enormous versatility in screening and documentation of wide varieties of evidence.



LSV2 detects blood spatter on black polo shirt in near infrared with a wide field-of-view range.



LSV2 Capabilities

HIGHLY SENSITIVE AND EFFICIENT SCREENING SYSTEM

With its **high sensitivity to both visible and near infrared light**, the LSV2 provides real-time screening and documentation (up to 40 frames per second) at full resolution with a sensitivity to light equal to and greater than the human eye.

Designed for rapid screening, the LSV2 documentation process is intuitive and user-friendly, with easy to perform photo capture capabilities. The LSV2's real-time, high resolution, "live" image takes the guesswork and long camera delays out of image capture.

The LSV2 utilizes wavelength specific, high energy LED lights offering greater light density. When paired with the chromatically correct optical zoom system, the LED lights allow examiners to screen and document large overviews exceeding a field of view of 26" down to small examinations of samples with a field of view as small as 1".

The LSV2 **preset and applicable metadata capabilities** allow for rapid changing between commonly used screening settings. Unlimited presets are effortless to create and provide a powerful tool for examiners, offering rapid repeat control of all settings of the LSV2 head from filter and excitation light to zoom, aperture, focus, and diopter settings.

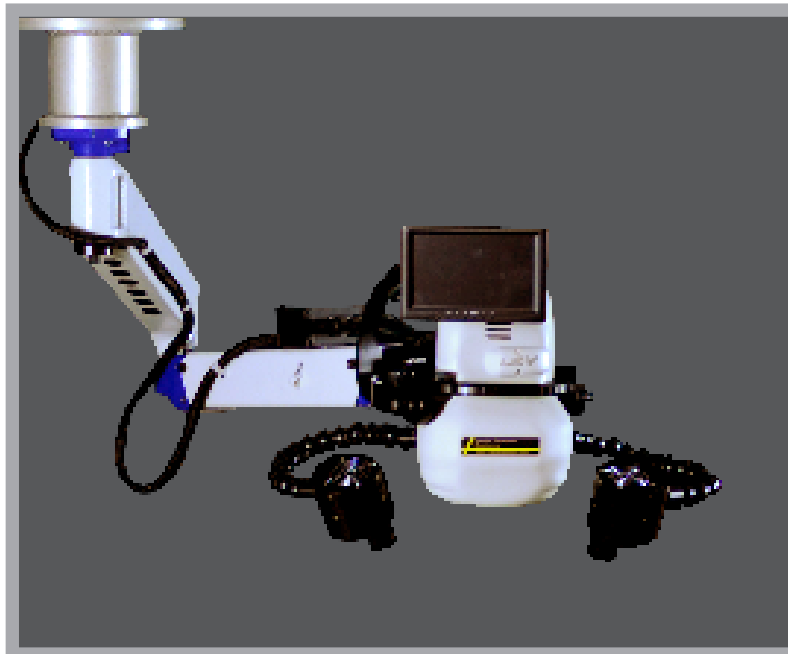
Leeds Vision 4.3 Software (LVI) offers numerous improvements, including additional annotation functionality, expanded preset capabilities, dual-comparison drawing, faster head startup/showdown, error messages to help diagnose problems, and an "Optometrist" program to assist in troubleshooting mode.

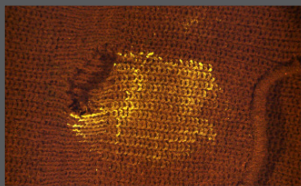
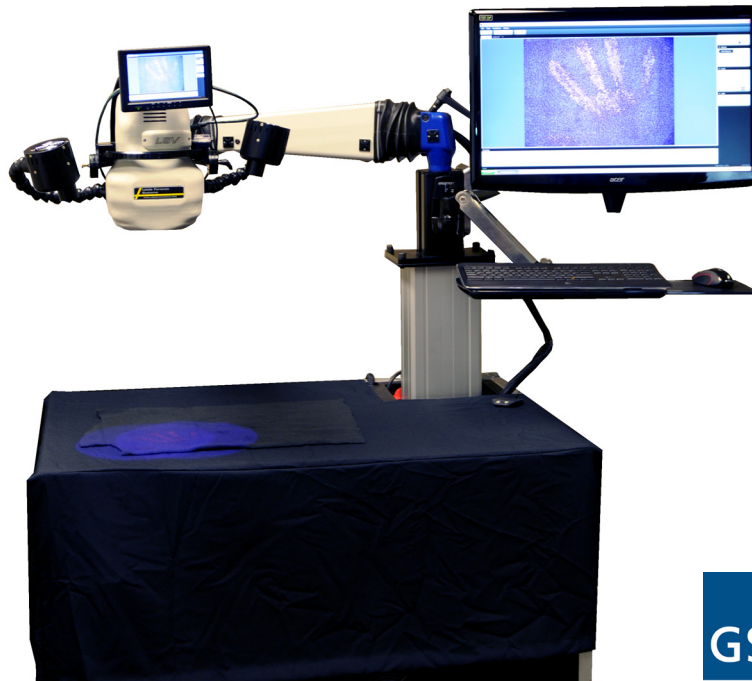
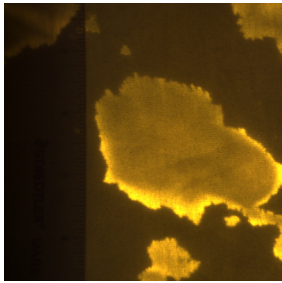
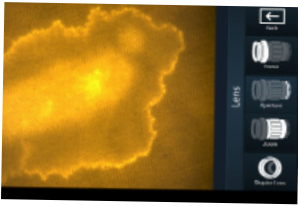
Metadata for all camera settings and software functions can be saved in standard image formats (JPEG, TIFF, PNG, BMP). LVI is license free and can be installed on existing computers to view LVI formatted images, freeing up the LSV2 for screening purposes.

LSV2 Filter	
5 position filter cassettes:	550 nm LP
	570 nm LP
	610 nm LP
	830 nm LP
	400 nm LP
Exchangeable five position barrier filter cartridge system	

Both Filter and LED Lighting are fully motorized

Multi-wavelength LED Lighting	
Ultraviolet (UV)	365 nm
Violet	405 nm
Blue	455 nm
Green	528 nm
Amber	589 nm
Near Infrared	860 nm
White (5700)	400-700 nm

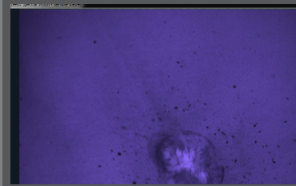




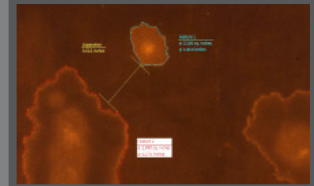
Saliva on a navy blue knit cap



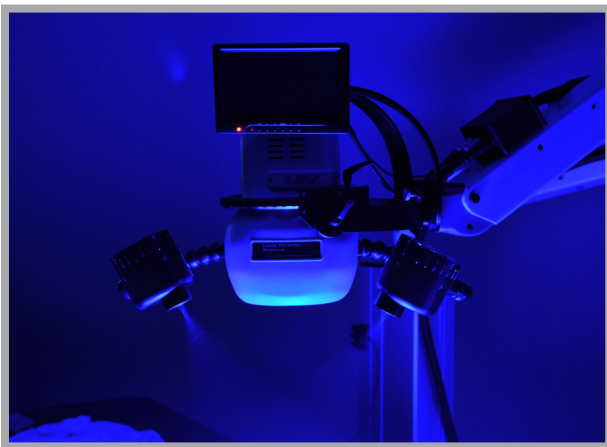
Victim Bruising



Leeds Vision Software presets



Semen with annotation



The LSV2 now has twice as great projected light circumference as the first generation LSV.

Learn more about how the LSV2 can enhance the screening capability of your forensic lab at: www.leedsmicro.com.

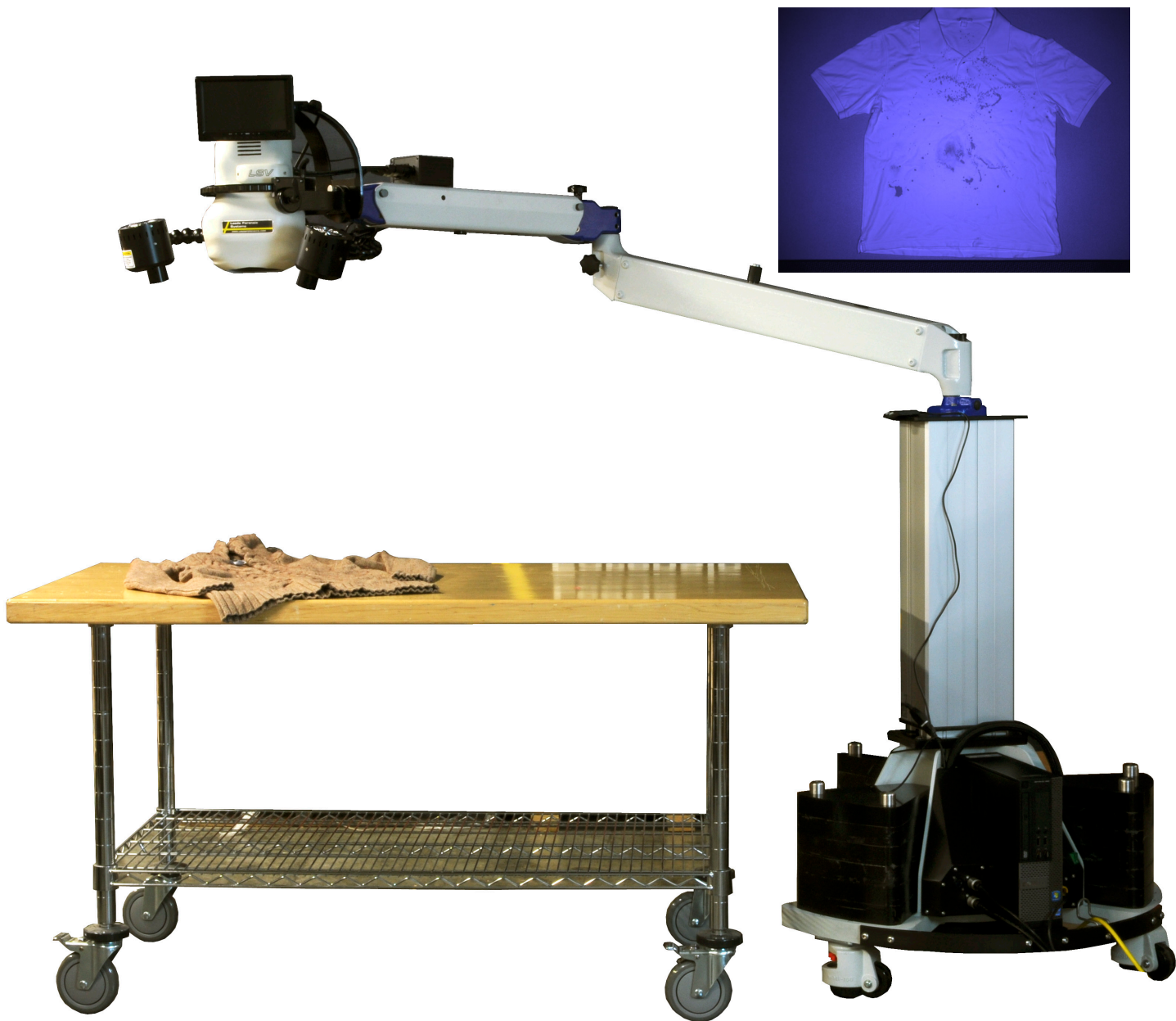


LSV2 Rollable Stand
Ceiling & Wall mounting options available.



Mobile workstation
holds keyboard and
screen in a compact
footprint





LSV2 is mobile, so can easily be moved to your sample table or where ever you need it.



LEEDS PRECISION INSTRUMENTS, INS.
DBA LEEDS FORENSIC SYSTEMS
17300 MEDINA ROAD, SUITE 600
MINNEAPOLIS, MN 55447
763-546-8575 // WWW.LEEDSMICRO.COM