



LEEDS STEREO MICROSCOPES

Leeds offers modular stereo microscope options -- built using **either Unitron Z645 or the Zeiss Stemi 508** optics.

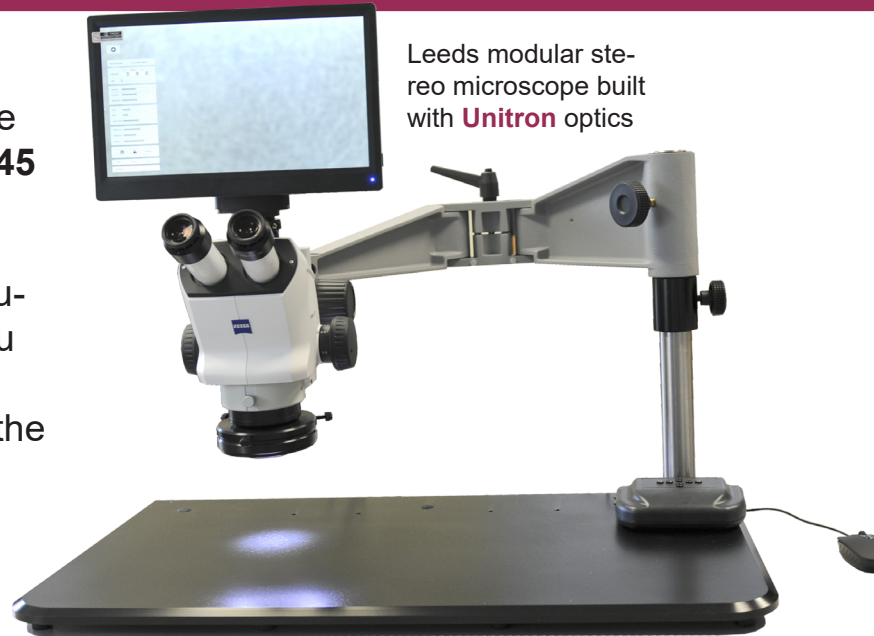
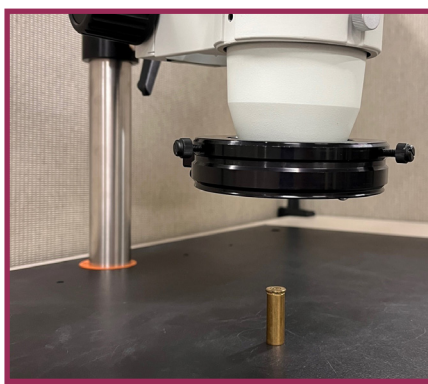
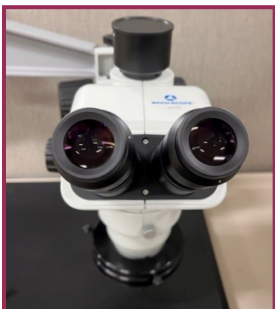
The long 24.5" reach of the Leeds articulated and jointed boom arm enables you to extend your optics out over a large sample. The system easily folds out of the way when not in use.

The arm is supported with our large **16" x 28" base** with a 15" or 24" mounting post, providing stability and versatility for even your most challenging samples. The post can be positioned in 3 different locations on the bread board.



Lighting and contrast are provided by a high intensity **dual row LED ring light**, with **quadrant and intensity control**.

ISO/IEC 17025:2017 certification of the accuracy of the camera measurements is included with each system.



Leeds modular stereo microscope built with **Unitron** optics



Leeds modular stereo microscope built with **Zeiss** optics



Leeds Precision Instruments, Inc.
17300 Medina Rd, Suite 300,
Minneapolis MN 55447 USA
763-546-8575 // www.leedsmicro.com