



Evofinder® Automated Ballistic Identification System

Scan 2D/3D * Match * Solve! One Tool Does It All!

The Evofinder® Automated Ballistic Identification System is a scanning device that **generates 2D and 3D digital images (like the one on the header of this page) of bullets and cartridge cases for visualization, virtual comparison microscopy (VCM), and automated searches within your databases.**

The Evofinder® database is designed with an advanced, **automated identification system to automatically correlate sample images** to other images stored in your database, providing a numerical similarity value between two representative images.

These similarities can identify possible matches between samples from a crime scene or historical case -- in addition to being used for Virtual Comparison Microscopy to determine if they are a match.

The Evofinder scanner's **universal cassette** mounts bullets and cartridge cases, allowing for image acquisition of the full bearing surface of pristine samples -- even damaged, and fragmented bullets -- in addition to the full head and wall of cartridge cases.

4-motor mechanics enable viewing from all angles.

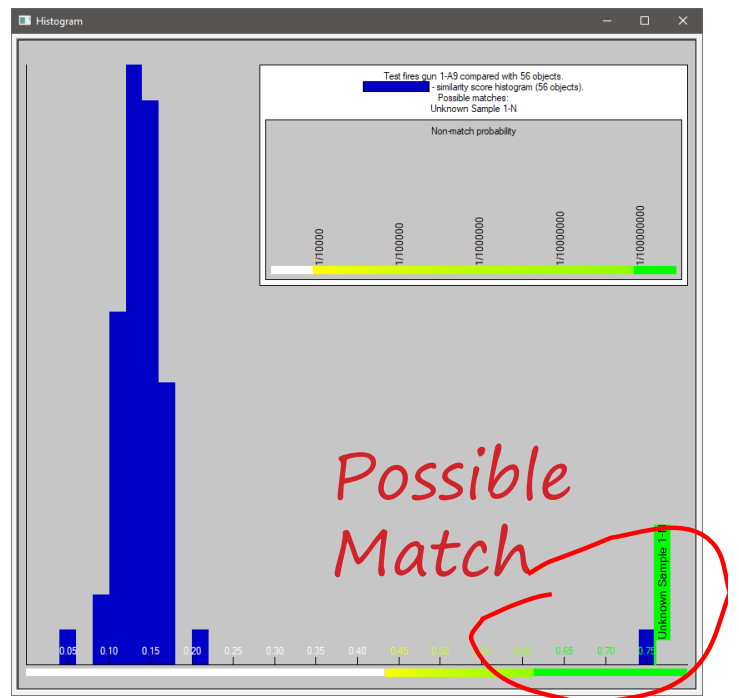
Sample Features Correlated:

On Bullets:

- Land Engraved Areas
- Groove Engraved Areas
- Slippage Marks

On Cartridge Cases:

- Breech face impression
- Striker mark
- Ejector Mark



Universal Cassette

Virtual Comparison Microscopy (VCM)

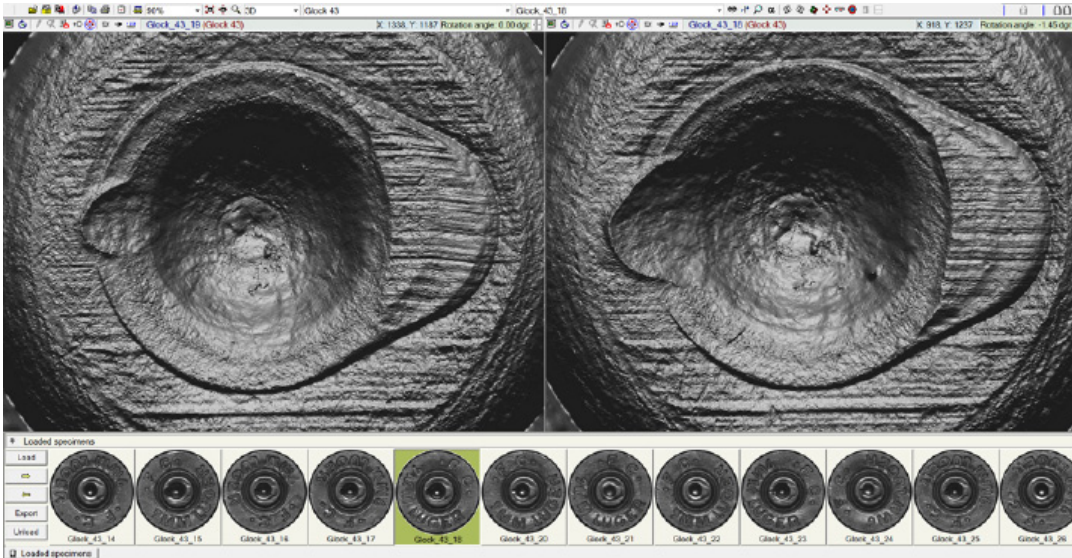
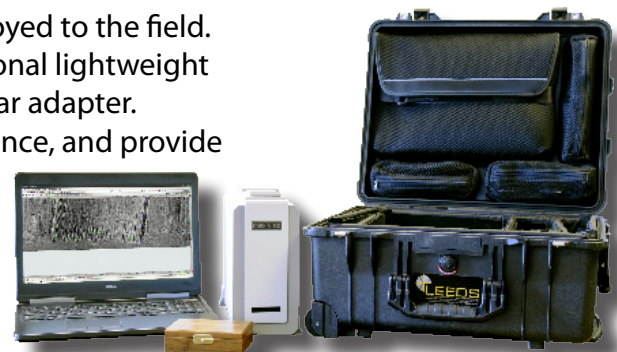


Image control, including:

- Full 2D and 3D Image manipulation
- Lighting angle, orientation, contrast, and brightness controls
- Auto-alignment of samples
- Sample image overlap
- Independent and synchronous sample manipulation

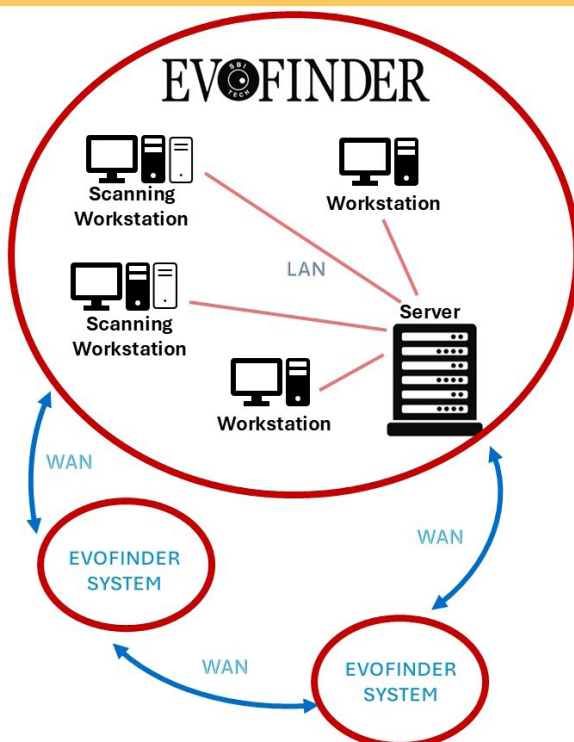
Portable Unit

The Evofinder® is designed for lab use, or to be easily deployed to the field. With the use of a laptop, the entire system fits into an optional lightweight polymer travel case and the scanner can run on a 12-volt car adapter. Evofinder® can be used for data collection, sorting of evidence, and provide Virtual Comparison Microscopy so triage for on-site analysis can begin sooner.



EVOFINDER

Interconnectivity



The Evofinder offers free-standing ballistic identification that **requires no outside connectivity** -- but can be connected with **other Evofinder systems** to allow for direct sharing or searches in other Evofinder databases.

An Evofinder network can operate within a Local Area Network, allowing for as many workstations to be connected as required for the laboratory environment. And, multiple labs can be connected by VPN or WAN connectivity to use a common server or connect separate databases, **allowing for instant sharing of sample data.**

Stories from EVOFINDER Users

In a midwestern state, the state police were able to connect Evofinders in 5 locations around the state -- effectively making **one large database for bullet correlation**.

In a county crime lab in a large western state, the Evofinder correlations enabled the staff to identify a previously-unknown **gun-trafficking ring** in a large metro area.

13 cold cases solved! A police crime lab in western North America switched from another system to the Evofinder. They re-ran 5000 samples that had been in the old system and Evofinder found 13 previously-unknown matches.



FIREARMS EVIDENCE PROCESSING

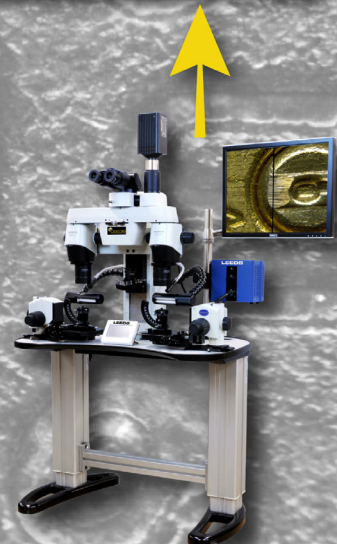


EVIDENCE IDENTIFICATION
& EXAMINATION

PREVENTING
VIOLENT
CRIME

AUTOMATED
BALLISTIC
IDENTIFICATION
SYSTEM

EVOFINDER®



EVIDENCE CONFIRMATION
MATCHING PROCESS

Key Features at a Glance

- **Universal Scanning:** Handles pristine, damaged, or fragmented bullets and cartridges.
- **Powerful Analysis Tools:** Virtual Comparison Microscopy (VCM) for side-by-side matching.
- **Seamless Connectivity:** Operates alone or integrates with global networks.

WHY choose EVOFINDER®?

- **It's FAST** -- You can instantly match crime scene evidence to your database
- **It's EFFICIENT** for evidence sorting -- quickly prioritize samples for analysis.
- **It's ACCURATE** -- yields 2D and 3D images for precise comparisons.
- **It's PORTABLE** -- Use it in the lab or take it to the crime scene. Evofinder goes where you need it!
- **Get VIRTUAL COMPARISON** -- you can analyze evidence on-site for rapid decisionmaking

Smart Tools

- Adjustable lighting, orientation, contrast, and brightness.
- Auto-alignment and side-by-side comparisons.
- Standalone or networked operation.

Call or email our knowledgeable staff to discuss your lab's evidence scanning needs:

LEEDS PRECISION INSTRUMENTS
17300 MEDINA ROAD, SUITE 600
MINNEAPOLIS MN 55447 USA

1-763-546-8575
SALES@LEEDSMICRO.COM
WWW.LEEDSMICRO.COM

What is Evofinder®?

The Evofinder® system is a cutting-edge solution for forensic ballistic analysis, designed to generate detailed 2D and 3D digital images of bullets and cartridge cases. It supports:

- **Visualization:** High-resolution imaging for analysis.
- **Virtual Comparison Microscopy (VCM):** Enhanced matching and comparison.
- **Automated Searches:** Seamless database integration for faster results.

What Can Evofinder Do?

Advanced Scanning Technology

- Universal cassette accommodates all bullets & cartridge cases -- whether pristine, damaged, or fragmented.
- 4-motor mechanics enable viewing from every angle.

Sophisticated Image Control

- Manipulate 2D/3D images with precision.
- Adjust lighting, orientation, contrast, and brightness.
- Features auto-alignment and image overlap tools.

Automated Matching

- Correlates images to identify potential matches using a numerical similarity score.
- Detects:
 - Bullets: Land engraved areas, groove engraved areas, and slippage marks.
 - Cartridge Cases: Breech face impressions, striker marks, and ejector marks.

