



# Optional Accessories for Firearms & Tool Marks Comparison Microscopes

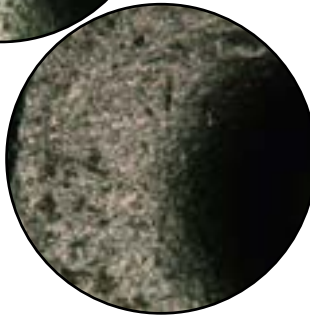
**Coaxial Illumination Kit** --  
an ideal solution for specular reflection,  
(mirror-like) especially when looking  
at granular breach face marks  
and analyzing firing pin  
impressions. This Kit  
provides glare-free  
illumination.



Breach face viewed through  
Leeds LCF3 with Coaxial  
Illumination

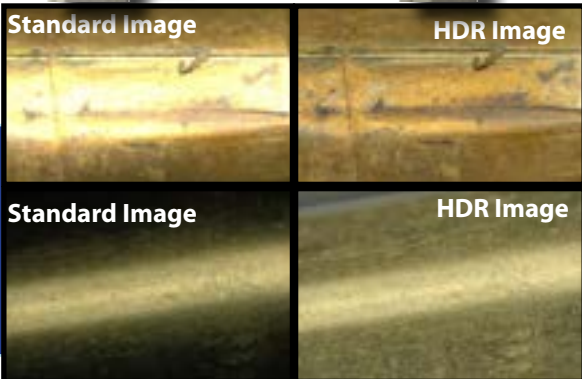


Breach face  
viewed through  
Leeds LCF3  
with Fluorescent  
Illumination



## Leeds Quick Change Kit

Add this mounting kit to easily and  
quickly swap out objectives



## LCF-CMOS5-HDR CAMERA

Leeds HDR Camera is optimized for the  
rounded shape of bullets and cartridge  
cases. It has a unique high dynamic range  
mode to eliminate glare and more accurately  
capture what is seen through the eye pieces.

## Leeds Ultra-Widefield Objective

**For Discovery Microscopes:**  
0.18x objective, largest FOV  
at 170mm. Continuous 1.35x  
to 27x parfocal zoom range.  
Working Distance of 106.5mm.

**For LCF-3 Microscopes:**  
0.18x objective, largest FOV  
at 200mm. Continuous 1.08x  
to 18x parfocal zoom range.  
Working Distance of 106.5mm.



# SAMPLE HOLDERS



**Magnetized Shell Holder**  
Sold as a Pair



**White Contrast Disk for Universal Holder** (Sold as a Pair)



**Mega Holder**



**Wax Platten Holder**



**Ball Pivot Positioner with 4" diameter platen**



**Ball Pivot Vise Holder**



**Illuminator Reflector** mounted on flexible tube arm.  
(Sold as a Pair)



**On-Center Holder**



**Reflected Document Holder**

# POST MOUNTS / SHELVEING / PIN MOUNTS & EYEPIECE HOLDER



**Monitor Post Mount**  
Post can be attached to the back of the table and can be oriented either to the right, the left, or middle of table.



**Keyboard & PC Mounts**  
Easily attaches to the microscope table leg (either right or left) and can be adjusted to desired height.

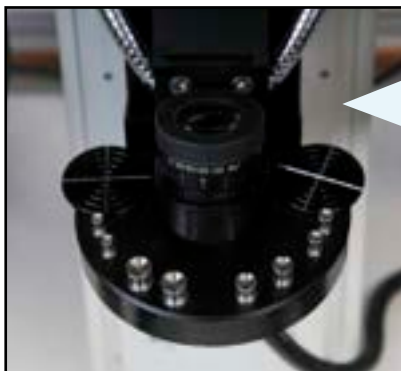


**LCF3 Table Extension Kit**  
Extension table fits the left or right side of the LCF3-station, includes a neoprene pad insert, and Leeds unique lip anti-roll off lip.

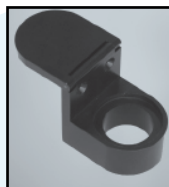


**LCF 16" shelf** attached to the LCF3

## LEEDS EYEPIECE AND PIN MOUNT HOLDER



**Pin Mount Holder Tray**, attaches to eyepiece holder; required when adding on.



**Eyepiece Holder**, attached to the LCF column & supports the pin mount holder.



**Set of Pin Mounts (Pairs)**



**LCF 12" SHELF**



**Eyepiece Set**

Includes  
(a) 10x eyepiece,  
(b) Widefield focusing 10x,  
and (c) 10x Crosshair



# LIGHTING OPTIONS

## LEEDS FLUORESCENT QUAD-TUBE LIGHTS



LCF2 Fluorescent Kit  
Cross Bar Mount



LCF2 Fluorescent Light  
Stage Mount

## LEEDS LED LIGHT STIX



**STAGE MOUNT**  
articulated arm  
attachment, stage  
mount



**COLUMN MOUNT**  
flexible tube arm,  
column mount.  
**LCF3 ONLY**



**CROSS BAR MOUNT**  
flexible tube arm,  
column mount

## QUAD-TUBE REPLACEMENT



Fluorescent  
Quad-tube,  
color-matched  
pair of  
replacement  
Bulbs. Sold as  
set of 2.



## TWIN-TUBE REPLACEMENT



Twin-tube  
Fluorescent  
replacement  
Bulbs, Sold as  
set of 2.



### Light Guide Positioner

Used to record and duplicate the distance from sample, height, angle of illumination, and rotary position. Useful for reverse lighting technique.



Bifurcated Fiber Optic Light  
Guide



Diffuser Lens



Focusing Spot Lens



Reflector attaches to station



Front mount attaches  
to LCF column

+



LCF Fiber Optic  
Cable

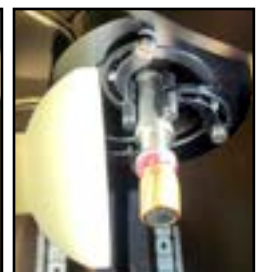
=



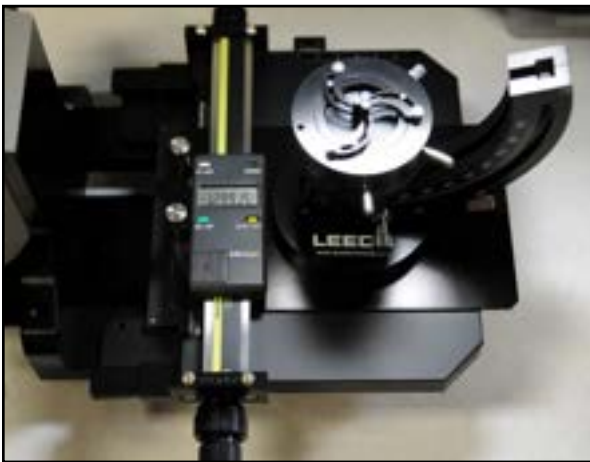
Front mount & Fiber  
Optic Cable



Bullet sample without Reflector (left) and  
with Reflector (right)



## OTHER ACCESSORIES



### LCF3-SCALE

Upgraded scale to replace older versions of LCF scales.



### LCF-COVER

Dust Cover for LCF



### Leeds Calibration Kit

Magnification matching kit

## CASTERS | ANTI-VIBRATION FEET

Anti-vibration Pads,  
designed for under  
the table legs of the  
LCF2 and LCF3.  
Sold individually.  
Part Number:  
LCF3-AVPAD



Leveling Caster,  
Sold as set of 4



Anti-vibration feet,  
Sold as set of 4 for  
LCF or LCF3



High deflection anti-  
vibration feet, Sold as  
set of 4 for LCF3



**Leeds Precision Instruments, Inc.**  
DBA Leeds Forensic Systems  
17300 Medina Road, Suite 600  
Minneapolis, MN 55447 USA  
+1.763-546-8575 // [www.leedsmicro.com](http://www.leedsmicro.com)